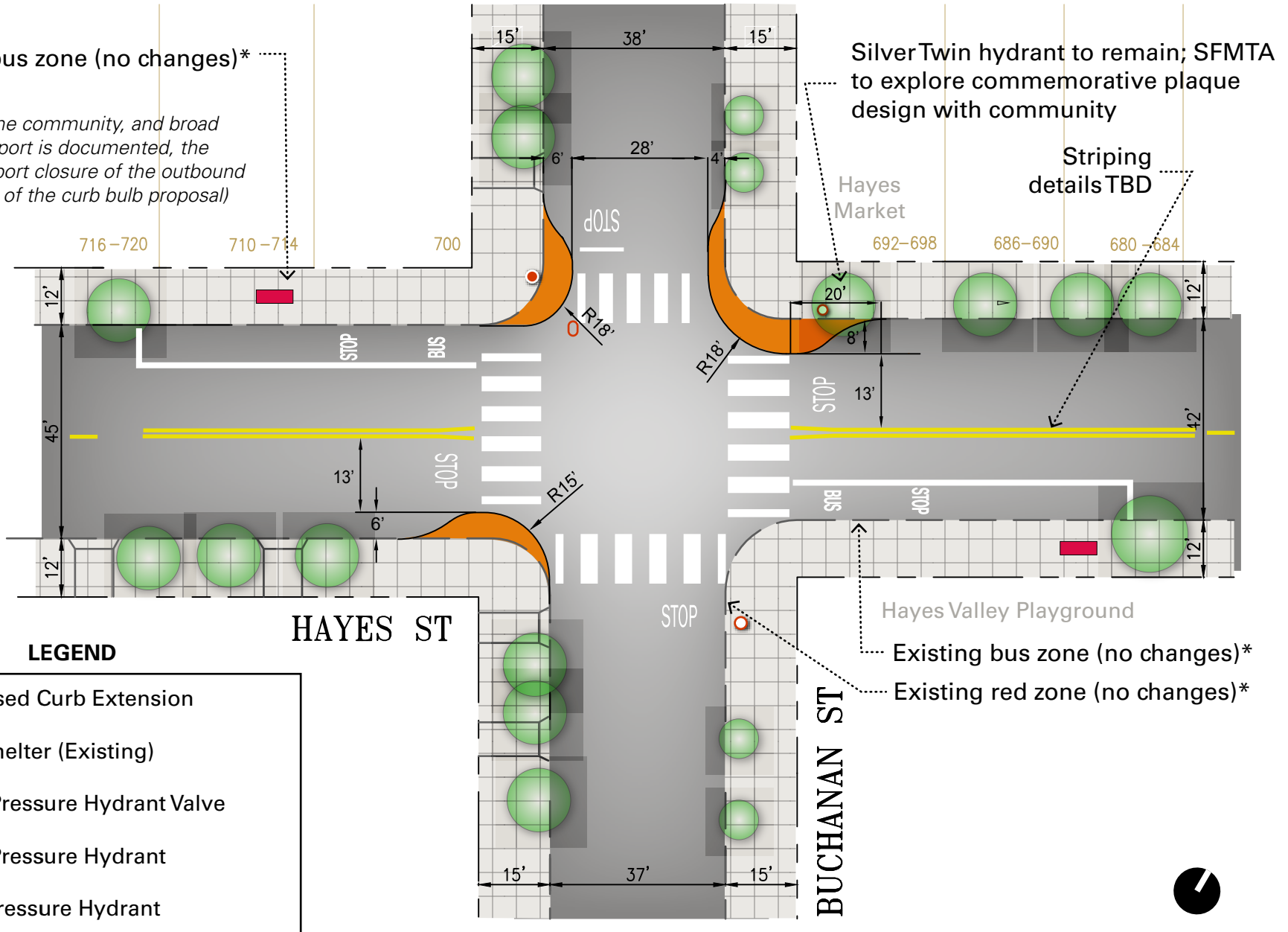







Existing bus zone (no changes)*

*If requested by the community, and broad neighborhood support is documented, the SFMTA could support closure of the outbound stop (independent of the curb bulb proposal)



LEGEND

-  Proposed Curb Extension
-  Bus Shelter (Existing)
-  High-Pressure Hydrant Valve
-  High-Pressure Hydrant
-  Low-Pressure Hydrant

Silver Twin hydrant to remain; SFMTA to explore commemorative plaque design with community

Striping details TBD

Hayes Valley Playground

Existing bus zone (no changes)*

Existing red zone (no changes)*



Hayes Street at Buchanan Street - Pedestrian Safety Spot Improvements Project